
CERTIFICATE OF APPROVAL

No CF 5301

This is to certify that, in accordance with
TS00 General Requirements for Certification of Fire Protection Products
The undermentioned products of

CONSORT ARCHITECTURAL HARDWARE LTD

School Lane, Forthampton, Gloucestershire, GL19 4QB
Tel: 01684 294894

Have been assessed against the requirements of the Technical Schedule(s)
denoted below and are approved for use subject to the conditions
appended hereto:

CERTIFIED PRODUCT

Consort 'CDCCS2/4',
'CDCCD2/4' and 'CDCCS3/6'
Concealed Overhead Door
Closers

TECHNICAL SCHEDULE

TS34 The Contribution of
Controlled Door Closing
Devices and Accessories to
Fire Resisting Doorsets

Signed and sealed for and on behalf of Exova (UK) Limited trading as
Warrington Certification



Sir Ken Knight
Chairman
Impartiality Committee



Paul Duggan
Certification Manager

Issued: 27th February 2015
Reissued: 18th May 2017
Next audit test due: 18/05/2018
Frequency: Annually
Valid to: 11th May 2022



CERTIFICATE No CF 5301

CONSORT ARCHITECTURAL HARDWARE LTD

CONSORT 'CDCCS2/4', 'CDCCD2/4' AND 'CDCCS3/6' CONCEALED OVERHEAD DOOR CLOSERS

1. This approval relates to Consort 'CDCCS2/4', 'CDCCD2/4' and 'CDCCS3/6' which are concealed overhead mounted door closing devices, with adjustable power. The closers include an external power adjustment and a slide arm channel of maximum length 457mm. The approval applies to the following configurations:

	CDCCS2/4	CDCCD2/4	CDCCS3/6
Single-action	✓	✗	✓
Double-action	✗	✓	✗
Body door mounted in top edge	✓	✓	✓
Body transom mounted	✓	✗	✓

Key: ✓ - approved ✗ - Not approved

2. This approval relates to their use with the following door assemblies:-

Single and double acting, latched or unlatched, intumescent sealed door assemblies consisting of timber faced and edged leaves with timber, cellulosic or mineral cores in timber frames having a fire resistance up to 30 minutes (Code ITT).

Single and double acting, latched or unlatched, intumescent sealed door assemblies consisting of timber faced and edged leaves with timber, cellulosic or mineral cores and having calcium silicate sub facings (for EI doors only) into hardwood timber frames and having a fire resistance of 60 minutes (Code ITT).

Single and double acting, latched or unlatched, door assemblies consisting of metallic faced and edged leaves with mineral fibre or paper honeycomb cores in metal frames having a fire resistance up to 240 minutes (Code MM and IMM).

Latched and unlatched, intumescent sealed door assemblies consisting of timber faced and edged leaves with timber, cellulosic or mineral cores in steel frames having a fire resistance up to 30 minutes (Code ITM).

Latched and unlatched, intumescent sealed door assemblies consisting of timber faced and edged leaves with timber, cellulosic or mineral cores and having calcium silicate sub facings (for EI doors only) in steel frames having a fire resistance of 60 minutes (Code ITM).

Note: Only the CDCCD2/4 closer is approved in double-acting configuration.

CERTIFICATE No CF 5301

CONSORT ARCHITECTURAL HARDWARE LTD

CONSORT 'CDCCS2/4', 'CDCCD2/4' AND 'CDCCS3/6' CONCEALED OVERHEAD DOOR CLOSERS

3. This certification is designed to demonstrate compliance of the product or system specifically with Approved Document B (England and Wales), the Technical Handbooks (Scotland) and Technical Booklet E (N. Ireland). If compliance is required to other regulatory or guidance documents there may be additional considerations or conflict to be taken into account.
4. The closer is approved on the basis of:
 - i) Initial type testing to EN1154 and BS EN 1634-1: 2000
 - ii) An appraisal against TS34
 - iii) Inspection of quality management system
 - iv) Inspection and surveillance of factory production control
 - v) Ongoing audit testing in accordance with EN 1154 requirements
5. This approval is applicable only to the specified closers used with door assemblies of proven fire resistance (as defined in BS 476: Part 22 and EN 1634-1) and having power ratings appropriate to the leaf sizes subject to a minimum size 3 (as specified in BS EN 1154) and including the manufacturer's supplied intumescent protection kit. Failure to install the intumescent protection identified in section 8 will invalidate this certificate.
6. The closer shall only be fitted to doorsets which have previously been shown capable of accommodating the installation of similar concealed items at the head of the doorset, without detriment to the doorset's performance.
7. The approval relates to on-going production. Product and/or its immediate packaging is identified with the manufacturer's name, the product name or number, the CERTIFIRE name or name and mark, together with the CERTIFIRE certificate number and application where appropriate

CERTIFICATE No CF 5301

CONSORT ARCHITECTURAL HARDWARE LTD

CONSORT 'CDCCS2/4', 'CDCCD2/4' AND 'CDCCS3/6' CONCEALED OVERHEAD DOOR CLOSERS

8. This approval relates to the above closers used with latched or unlatched single-leaf or double-leaf, assemblies consisting of timber faced and edged leaves with timber, cellulosic or mineral cores and in timber frames:
- a. CDCCS2/4 & CDCCD2/4 with the bodies mounted in the door leaf, are approved for FD20 & FD30 single-action and double- action doorsets of the following specification (Code ITT):
 - i. Door leaves shall not less than 44 mm thick doors.
 - ii. The door frame shall consist of softwood or hardwood with a minimum density of 510 kg/m³ and with a minimum section size 94 mm wide by 43 mm thick.
 - iii. The closer shall be fitted with intumescent protection in the form of Mono ammonium phosphate sheet material, fully lining the mortices cut into the top edge of the door leaf and frame head member to accommodate the closer body and guide channel assembly. The intumescent protection shall be provided only by the manufacturer and referenced within the manufacturer's product data sheet
 - iv. In addition the perimeter intumescent fire seals within the door or frame shall by-pass the closer or guide rail by a minimum of 10mm on each side.
 - b. CDCCS2/4 & CDCCD2/4 closers with the bodies mounted in the door leaf, are approved for FD60 or EI60 single-action and double action doorsets of the following specification (Code ITT):
 - i. Door leaves shall not less than 54 mm thick doors.
 - ii. For EI 60 doors only, the leaf is to include a minimum 4.5 mm thick Masterclad of nominal density 1500 kg/m³, bonded to stiles, rails and core using a resorcinol type adhesive.
 - iii. The door frame shall consist of hardwood with a minimum density of 640 kg/m³with a minimum section size 94 mm wide by 44 mm thick.
 - iv. The closer shall be fitted with intumescent protection in the form of Mono ammonium phosphate sheet material fully lining the mortices cut into the top edge of the door leaf and frame head member to accommodate the closer body and guide channel assembly (as below). The intumescent protection shall be provided only by the manufacturer and referenced within the manufacturer's product data sheet
 - v. In addition the perimeter intumescent fire seals within the door or frame shall by-pass the closer or guide rail by a minimum of 10mm on each side.

CERTIFICATE No CF 5301

CONSORT ARCHITECTURAL HARDWARE LTD

CONSORT 'CDCCS2/4', 'CDCCD2/4' AND 'CDCCS3/6' CONCEALED OVERHEAD DOOR CLOSERS

- c. CDCCS3/6 closers with the bodies mounted in the door leaf, are approved for FD60 or EI60 single-action doorsets of the following specification (Code ITT):
- Door leaves shall not less than 54 mm thick doors.
 - For EI 60 doors only, the leaf is to include a minimum 4.5 mm thick Masterclad of nominal density 1500 kg/m³, bonded to stiles, rails and core using a resorcinol type adhesive.
 - The door frame shall consist of hardwood with a minimum density of 640 kg/m³ with a minimum section size 94 mm wide by 44 mm thick.
 - The closer shall be fitted with intumescent protection in the form of Mono ammonium phosphate sheet material fully lining the mortices cut into the top edge of the door leaf and frame head member to accommodate the closer body and guide channel assembly (as below). The intumescent protection shall be provided only by the manufacturer and referenced within the manufacturer's product data sheet
 - In addition the perimeter intumescent fire seals within the door or frame shall by-pass the closer or guide rail by a minimum of 10mm on each side.
- d. Transom mounted CDCCS2/4 & CDCCS3/6 closers are approved for FD30 and EI30 single acting doorsets of the following specification (Code ITT):
- Door leaves shall not less than 44 mm thick doors with a hardwood lipping to the top edge minimum 8 mm thick, 640 kgm³ minimum density.
 - The door frame shall consist of softwood or hardwood with a minimum density of 510 kg/m³ and with a minimum section size 80 mm wide by 65 mm thick.
 - Closer body and guide rail to be fitted with manufacturers intumescent Fire Pack – 2 Part.
 - EFS model wire ways in door frame to be sealed with suitable acrylic intumescent sealant.

CERTIFICATE No CF 5301

CONSORT ARCHITECTURAL HARDWARE LTD

CONSORT 'CDCCS2/4', 'CDCCD2/4' AND 'CDCCS3/6' CONCEALED OVERHEAD DOOR CLOSERS

- e. Transom mounted CDCCS2/4 & CDCCS3/6 closers are approved FD60 or EI60 single acting doorsets of the following specification (Code ITT):
- i. Door leaves shall not less than 54 mm thick doors with a hardwood lipping to the top edge minimum 8 mm thick, 640 kgm³ minimum density.
 - ii. For EI 60 doors only, the leaf is to include a minimum 4.5 mm thick Masterclad of nominal density 1500 kg/m³, bonded to stiles, rails and core using a resorcinol type adhesive.
 - iii. The door frame shall consist of softwood or hardwood with a minimum density of 640 kg/m³ and with a minimum section size 80 mm wide by 65 mm thick.
 - iv. Closer body and guide rail to be fitted with manufacturers intumescent Fire Pack – 2 Part.
 - v. In addition the perimeter intumescent fire seals within the door or frame shall by-pass the closer or guide rail by a minimum of 10mm on each side.
 - vi. EFS model wire ways in door frame to be sealed with suitable acrylic intumescent sealant.

Note: Failure to install the intumescent protection identified in the configurations above will invalidate this certificate.

- f. CDCCS2/4 & CDCCS3/6 closers with the bodies mounted in the door leaf, are approved for FD30, FD60, FD90, FD120, E30, E60, E90 and E120 single-action doorsets of the following specification (Code MM/IMM):
- i. Door leaves shall not less than 45 mm thick doors.
 - ii. No additional intumescent protection is required

CERTIFICATE No CF 5301

CONSORT ARCHITECTURAL HARDWARE LTD

CONSORT 'CDCCS2/4', 'CDCCD2/4' AND 'CDCCS3/6' CONCEALED OVERHEAD DOOR CLOSERS

9. The following table shows acceptable doorset types and fire resistance periods:

Class	Approved Door Type				
	IMM	MM	ITT	ITM	ITC
FD20	✓	✓	✓	✓	✓
FD30	✓	✓	✓	✓	✓
FD60	✓	✓	✓	✓	✓
FD120	✓	✓	x	x	x
FD240	✓	✓	x	x	x
E 20	✓	✓	x	x	x
EI 20	x	x	x	x	x
E 30	✓	✓	x	x	x
EI 30	x	x	✓*	x	x
E 60	✓	✓	x	x	x
EI 60	x	x	✓	✓	x
E 90	✓	✓	x	x	x
EI 90	x	x	x	x	x
E 120	✓	✓	x	x	x
EI 120	x	x	x	x	x
E 240	✓	✓	x	x	x
EI 240	x	x	x	x	x

Key:

✓ - approved

x - Not approved

✓* *Applies to transom mounted units in single action doorsets only.*

CERTIFICATE No CF 5301

CONSORT ARCHITECTURAL HARDWARE LTD

CONSORT 'CDCCS2/4', 'CDCCD2/4' AND 'CDCCS3/6' CONCEALED OVERHEAD DOOR CLOSERS

10. Doors are classified as the following types:

Type MM - 20 minute to 240 minute doorsets that consist of metallic leaves in metallic frames that do not contain intumescent materials in the frame to leaf gap.

Type IMM - 20 minute to 240 minute doorsets that consist of metallic leaves in metallic frames that contain intumescent materials in the frame to leaf gap.

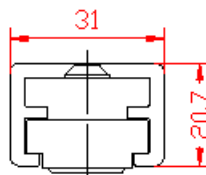
Type ITT - 20 minute to 120 minute doorsets containing intumescent seals and consisting of non-metallic faced and edged leaves hung in timber frames

Type ITM - 20 minute to 120 minute doorsets containing intumescent seals and consisting of non-metallic faced and edged leaves hung in metal frames.

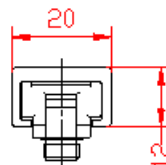
Type ITC - 20 minute to 120 minute doorsets containing intumescent seals and consisting of non-metallic faced and edged leaves hung in proprietary composite frames, of which the principal material is other than timber or metal but which may include any other materials.

Scope of Approval:

- The following specific guide channels are approved for use with the concealed closers:
 - Non-hold open single-action guiderail with lever arm 30 x 20mm
 - Non- hold open double-action guide rail with lever arm 30 x 20mm



- Non-hold open single-action guiderail with lever arm 20 x 12mm
- Non-hold open double-action guiderail with lever arm 20 x 12mm



CERTIFICATE No CF 5301

CONSORT ARCHITECTURAL HARDWARE LTD

CONSORT 'CDCCS2/4', 'CDCCD2/4' AND 'CDCCS3/6' CONCEALED OVERHEAD DOOR CLOSERS

Classification codes

The above approval provides the following classifications:

CDCCS2/4 – Maximum leaf weight 130 kg (Single-acting Applications):

3	8	4 3	1	1	4
---	---	--------	---	---	---

CDCCS3/6 – Maximum leaf weight 180 kg (Single-acting Applications):

3	8	6 3	1	1	4
---	---	--------	---	---	---

CDCCD2/4 – Maximum leaf weight 130 kg (Double-acting Applications):

3	8	3	1	1	1
---	---	---	---	---	---

Further Information

Further information regarding the details contained in this certificate may be obtained from Consort Architectural Hardware Ltd (Tel: 01684 294894).

Further information regarding the CERTIFIRE certification and other approved products can be obtained from CERTIFIRE (Tel: 01925 646777).